

Technical data

Power Supply	3V lithium battery, type CR2430, enclosed
Lifetime, battery	approx. 10 years
Frequency	433,92 MHz
No. of unique identities	2 ²⁴
Automatic limitation of transmission	25 sec
Operating temperature	-10 to +55 °C
Colour	White

Range

The main factor that may influence the coverage of the system is presence of metal elements near the devices (the transmission is done by means of a radio signal). Within free areas, the coverage is 30 - 50 m; inside buildings the coverage is 15 - 30 m, depending on wall thickness and amount of iron elements in the construction.

Installation

The transmitter is mounted using screws or double-sided adhesive tape.

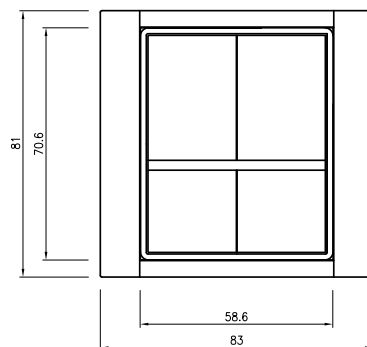
Included in

The Four Button Wall Transmitter is included in Commander Control System Kit 2 and 3.

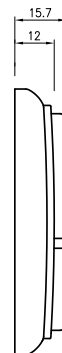
The Four Buttons Wall Transmitter is used together with one or multiple receivers within the product range of Commander Control Systems. Under each button there is a micro-switch and when pushing a button, a coded signal (RF) is sent to the receiver(s) that are programmed to respond to that specific code. Each wall transmitter has a unique identification code and the transmitted code also includes information about which micro-switch/button that has been pressed. The transmitter is powered by a 3V lithium battery, and it is possible to mount it practically anywhere; on flammable surfaces, near a child's bed, on the glass etc., without any risk of injury being caused by electricity or the risk of fire.



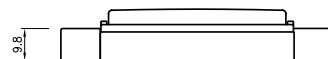
Dimensions



Front view



Side view



Bottom view